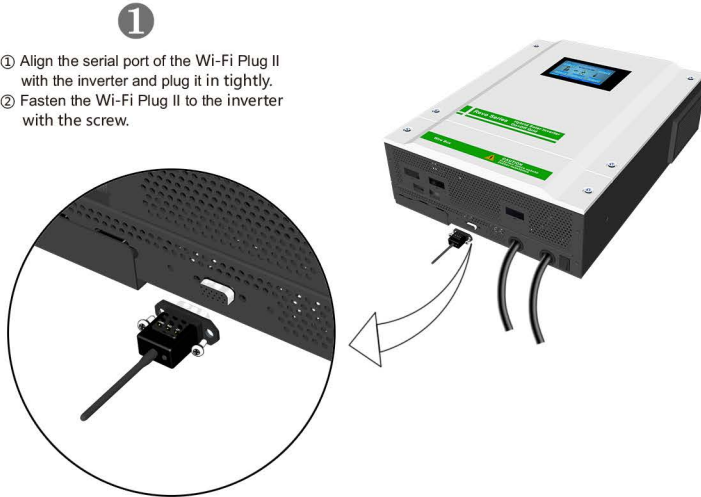


# Wi-Fi Plug II

## Quick Installation Guideline

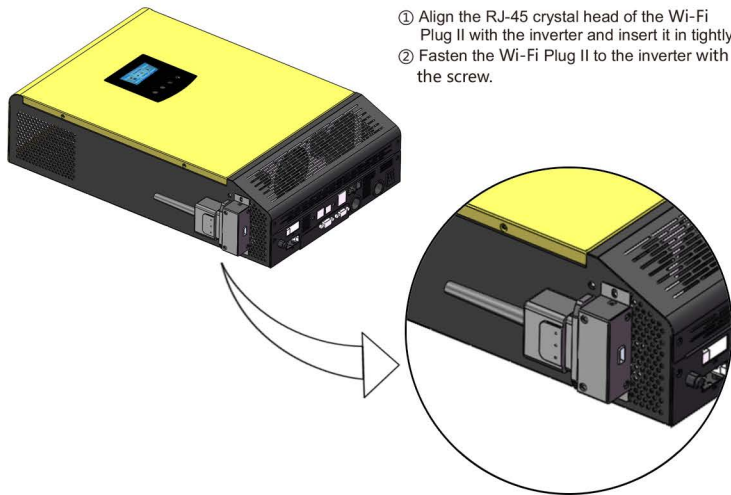
### 1. Installation

- ① Align the serial port of the Wi-Fi Plug II with the inverter and plug it in tightly.
- ② Fasten the Wi-Fi Plug II to the inverter with the screw.



②

- ① Align the RJ-45 crystal head of the Wi-Fi Plug II with the inverter and insert it in tightly.
- ② Fasten the Wi-Fi Plug II to the inverter with the screw.



### 2. Wireless Router Connection

#### 2.1 Download APP

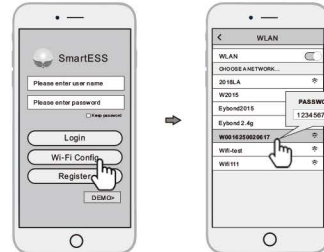
- ① Scan the QR Code on the right side and download the APP.



SmartESS(iOS)



SmartESS(Android)

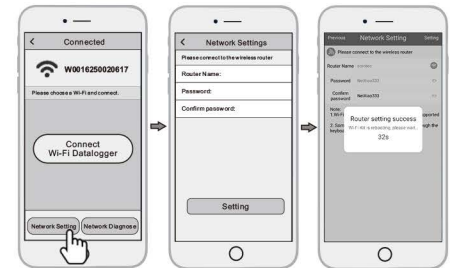


#### 2.2 Connect Wi-Fi Datalogger

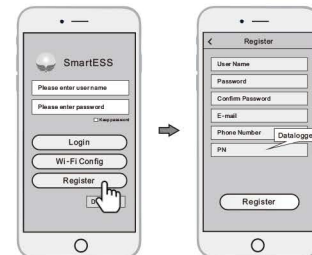
- ① Open the APP, tap the **Wi-Fi Config** button to enter this page.
- ② Select the same number of Wi-Fi PlugII PN to connect on your phone WLAN. (Initial Password:12345678)

#### 2.3 Network Setting

- ① Then tap the Network Setting button.
- ② According to the prompts, type in the information to finish the network setting.
- ③ After the Wi-Fi PlugII is restarted, reconnect the Wi-Fi which connected by step 2.2.
- ④ Confirm the status of the LED light (After step2.3, when 4 LED light keep on, showing the normal working status).



### 3. Create Account And Add Datalogger



#### 3.1 Create Account

- ① Open the APP, tap the **Register** button to enter this page.
- ② According to the prompts, type in the information to create an account.

#### 3.2 Add Datalogger

- ① Login the account and click the **Datalogger** button. Tap the "+" button on the top-right corner of the **Datalogger** page.
- ② Scan the PN on the Wi-Fi Plug II, or type in it manually.
- ③ According to the prompts, type in the information to finish add datalogger.

